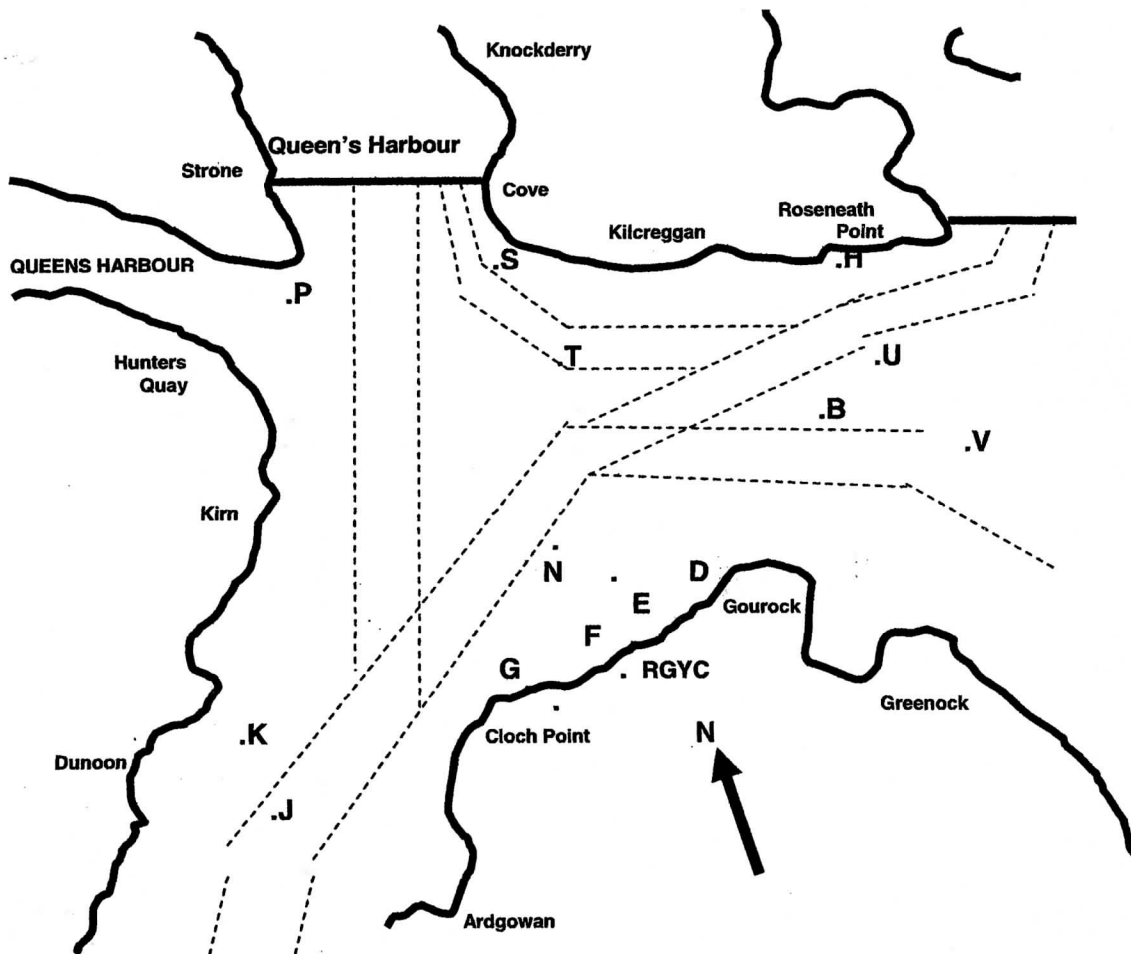


COURSE CHART & KEY TO RACING MARKS



B	IRONOTTER	COL YELLOW SPHERICAL, IRONOTTER OUTFALL
D	GOUROCK	RGYC RACING MARK, DAY-GLO ORANGE CAN
E	ASHTON	RGYC RACING MARK, DAY-GLO ORANGE CAN
F	MCINROY'S POINT	RGYC RACING MARK, DAY-GLO ORANGE CAN
G	LEVAN	RGYC RACING MARK, DAY-GLO ORANGE CAN
H	PORTKIL PT.	COL LIT CAN (RED) ARD NO. 4
J	WARDEN BANK	COL LIT CONE (GREEN)
K	DUNOON BANK	COL LIT PILLAR (BLACK/YELLOW/BLACK)
N	TEMPORARY MARK	LAI SEAWARD AND WEST OF MARK 'E'
P	STRONE	COL LIT PILLAR (YELLOW/BLACK) NO. 30
S	BARONS POINT	COL LIT CONE (GREEN) KIL NO. 3
T	KILCREGGAN	COL LIT CAN (RED) KIL NO. 2
U	ROSNEATH PATCH N	COL LIT CONE (GREEN) ARD NO. 5
V	ROSNEATH PATCH S	COL LIT CAN (RED) NO. 27
X	TEMPORARY INFLATABLE	LAI IN VARIOUS POSITIONS, WIND DIRECTION DICTATING
Z	START MARK INFLATABLE	DESIGNATED ACCORDINGLY LAID AT 'E' OR EASTOR WEST OF 'E'